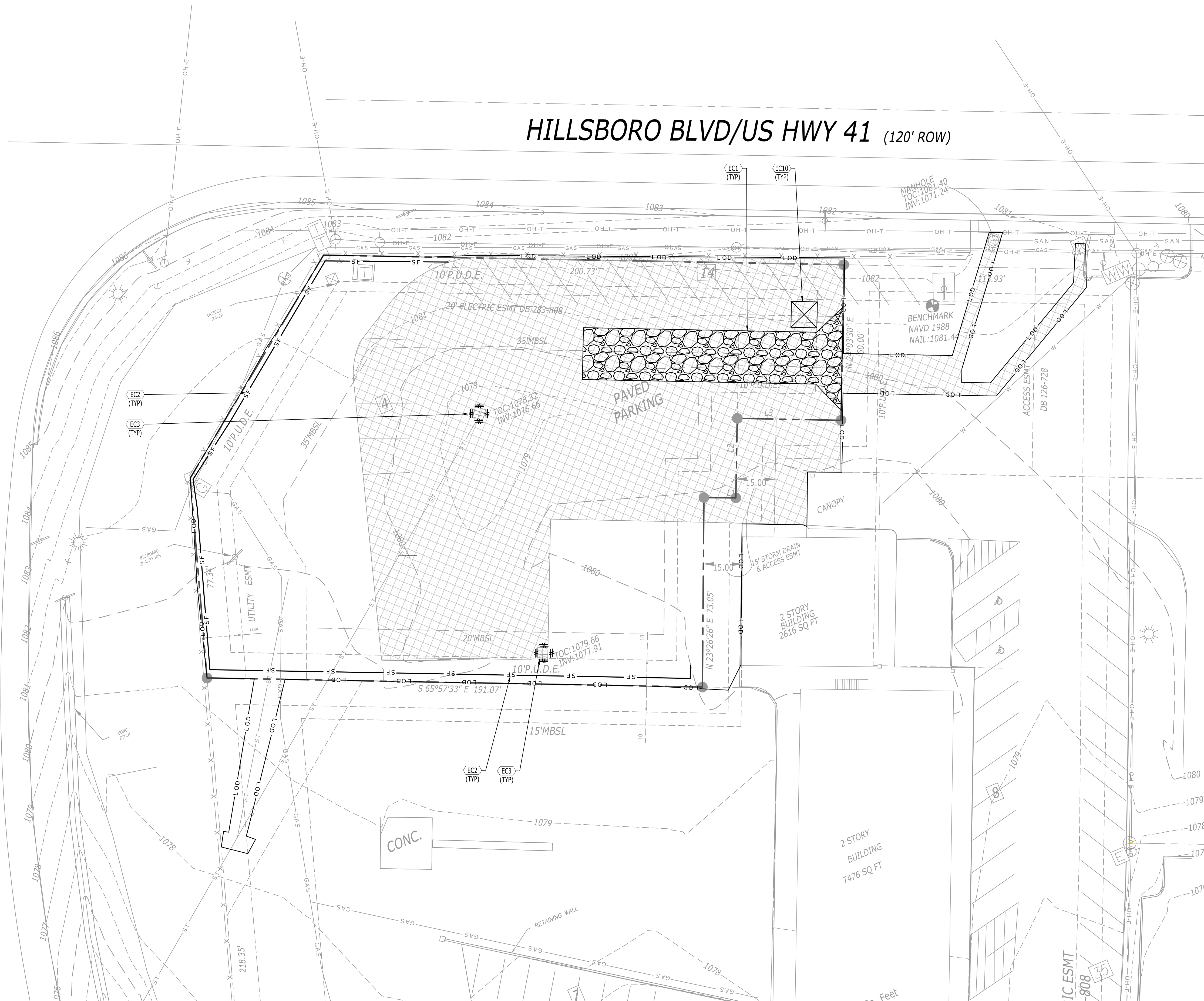


P:\2024\20240293_Panera - Manchester.dwg Construction\20240293_C3.0_ERD.dwg-C3.0_INITIAL EROSION CONTROL PLAN Apr 16, 2025 cwalker

INTERSTATE 24 RAMP VARIABLE ROW



LEGEND	
LIMITS OF DISTURBANCE	— L O D —
SILT FENCE	— SF —
INLET PROTECTION	— IP —

EROSION CONTROL KEYNOTES		
CODE	DESCRIPTION	DET #/SHT #
(EC1)	TEMPORARY CONSTRUCTION ENTRANCE	1 / C3.2
(EC2)	SILT FENCE	3 / C3.2
(EC3)	INLET PROTECTION	4 / C3.2
(EC10)	CONCRETE WASH-OUT	2 / C3.2

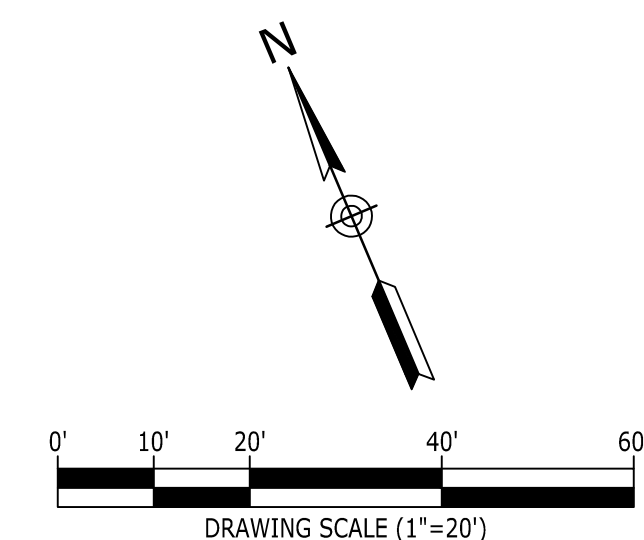
SITE DESCRIPTION AND NOTES:

THE SITE IS LOCATED ON TAX MAP 085, PARCEL 085 022.04 IN MANCHESTER, COFFEE COUNTY, TENNESSEE. CONSTRUCTION ACTIVITY ON THIS SITE WILL CONSIST OF DISTURBING APPROXIMATELY 0.88± ACRES TO CONSTRUCT A 2,400 SF COMMERCIAL BUILDING AND ASSOCIATED PARKING.

- APPROXIMATE CONSTRUCTION TIME TABLE:
 BEGIN CONSTRUCTION - APRIL 2025
 COMPLETE CONSTRUCTION - APRIL 2026
- CONSTRUCTION SEQUENCE:
 - ATTEND WATER QUALITY DIVISION PRE-CONSTRUCTION MEETING.
 - INSTALL CONSTRUCTION ENTRANCE AND SILT FENCE
 - CONTACT WATER QUALITY DIVISION - EROSION CONTROL INSPECTOR FOR INSPECTION OF EROSION CONTROL DEVICES TO OBTAIN GRADING PERMIT.
 - CLEAR AND GRUB THE REMAINING SITE.
 - CONSTRUCT REMAINING SITE ACCORDING TO APPROVED PLANS, INCLUDING ALL ADDITIONAL EROSION CONTROL DEVICES.
 - UPON PERMANENT SITE STABILIZATION SEED AND STRAW.
 - REMOVE ALL OTHER EROSION TEMPORARY CONTROL DEVICES PRIOR TO AS-BUILT APPROVALS.
- TOTAL PROJECT AREA = 33,546.02 SF (0.77± AC.)
 DISTURBED AREA = 38,310 S.F. (0.88± AC.)

EROSION CONTROL NOTES:

- EROSION PREVENTION AND SEDIMENT CONTROL MEASURES MUST BE IN PLACE AND FUNCTIONAL BEFORE EARTH MOVING OPERATION BEGINS AND MUST BE CONSTRUCTED AND MAINTAINED THROUGHOUT THE CONSTRUCTION PERIOD. TEMPORARY MEASURES MAY BE REMOVED AT THE BEGINNING OF THE WORKDAY BUT MUST BE REPLACED AT THE END OF THE WORKDAY.
- THE FOLLOWING RECORDS SHALL BE MAINTAINED ON OR NEAR SITE: THE DATES WHEN MAJOR GRADING ACTIVITIES OCCUR; THE DATES WHEN CONSTRUCTION ACTIVITIES TEMPORARILY OR PERMANENTLY CEASE ON A PORTION OF THE SITE; THE DATES WHEN STABILIZATION MEASURES ARE INITIATED; INSPECTION RECORDS AND RAINFALL RECORDS.
- THE CONTRACTOR SHALL MAINTAIN A RAIN GAUGE AND DAILY RAINFALL RECORDS AT THE SITE OR USE A REFERENCE SITE FOR A RECORD OF DAILY AMOUNT OF PRECIPITATION.
- PRE-CONSTRUCTION VEGETATIVE GROUND COVER SHALL NOT BE DESTROYED, REMOVED OR DISTURBED MORE THAN 10 DAYS PRIOR TO GRADING OR EARTH MOVING UNLESS THE AREA IS SEEDED AND/OR MULCHED OR OTHER TEMPORARY COVER IS INSTALLED.
- CONSTRUCTION MUST BE SEQUENCED TO MINIMIZE THE EXPOSURE TIME OF GRADED OR DENUDED AREAS.
- SEDIMENT SHOULD BE REMOVED FROM SEDIMENT TRAPS, SILT FENCES, SEDIMENTATION PONDS AND OTHER SEDIMENT CONTROLS AS NECESSARY AND MUST BE REMOVED WHEN DESIGN CAPACITY HAS BEEN REDUCED BY 50% OR AS DIRECTED BY OWNERS REPRESENTATIVE.
- THE CONTRACTOR SHALL REMOVE SEDIMENT FROM ALL DRAINAGE STRUCTURES BEFORE ACCEPTANCE BY LOCAL GOVERNING AGENCY OR AS DIRECTED BY THE OWNER'S REPRESENTATIVE.
- THE CONTRACTOR SHALL REMOVE THE TEMPORARY EROSION AND WATER POLLUTION CONTROL DEVICES ONLY AFTER A SOLID STAND OF GRASS HAS BEEN ESTABLISHED ON GRADED AREAS AND WHEN IN THE OPINION OF THE OWNER'S REPRESENTATIVE, THEY ARE NO LONGER NEEDED.
- DISTURBED AREAS SHALL BE STABILIZED WITHIN 14 DAYS OF THE COMPLETION OF GRADING ACTIVITIES. SLOPES 3:1 OR STEEPER SHALL BE STABILIZED WITHIN 7 DAYS.



FERBER COMPANY
 222 2ND AVENUE NORTH,
 SUITE 314
 NASHVILLE, TN 37201
 615-477-4486



CONSTRUCTION DRAWINGS
PANERA - MANCHESTER
 2314 HILLSBORO BLVD.
 MANCHESTER, COFFEE COUNTY, TENNESSEE

NO.	DATE	DESCRIPTION

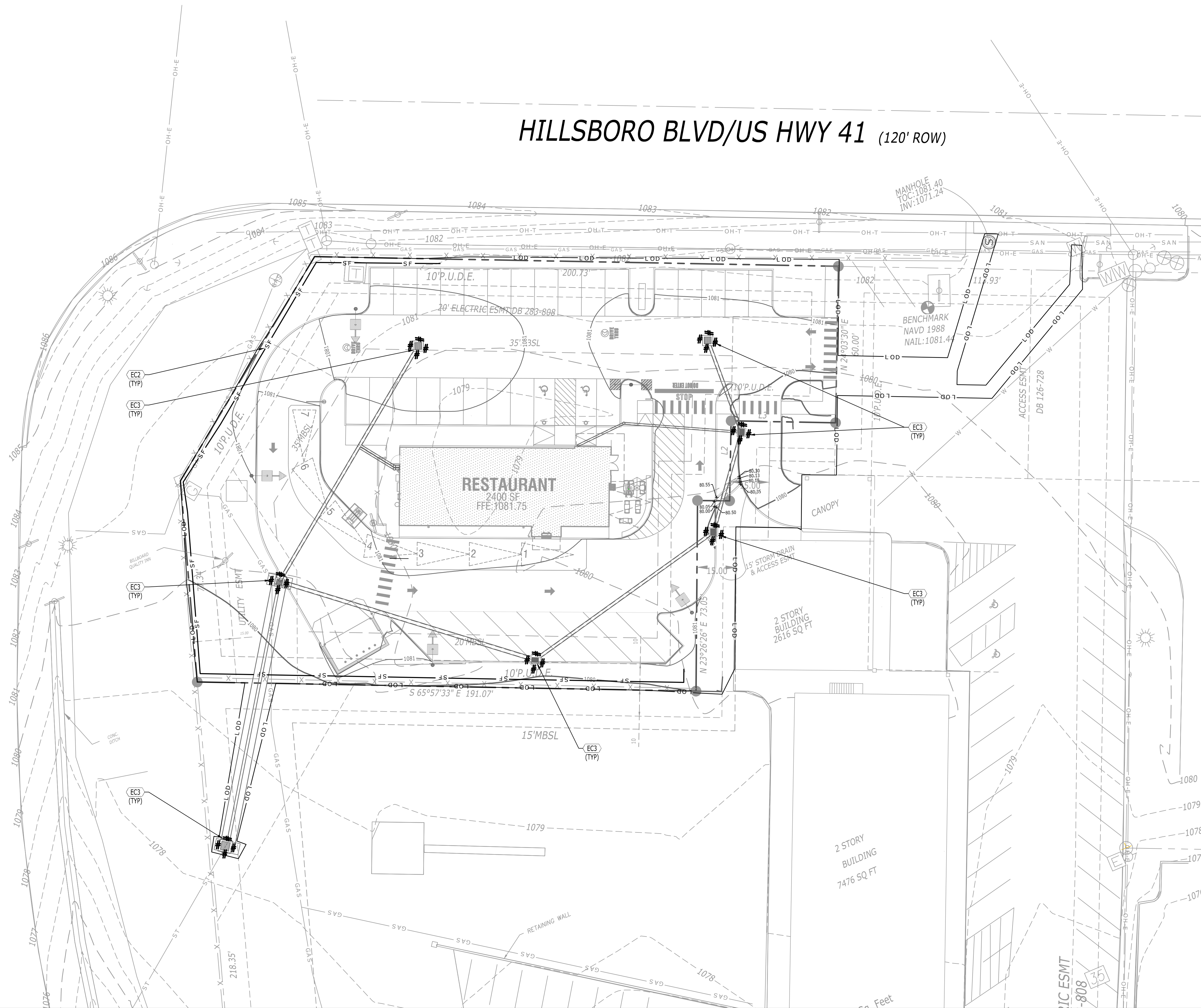
DRAWING TITLE
INITIAL EROSION CONTROL PLAN

PROJECT NUMBER
 20240293

DRAWING NUMBER
C3.0

P:\2024\20240293_Panera - Manchester.dwg Construction\20240293_C3.1_ERD.dwg-C3.1_FINAL EROSION CONTROL PLAN Apr 16, 2025 cwalker

INTERSTATE 24 RAMP VARIABLE ROW



LEGEND	
LIMITS OF DISTURBANCE	LOD
SILT FENCE	SF
INLET PROTECTION	IP

EROSION CONTROL KEYNOTES		
CODE	DESCRIPTION	DET #/SHT #
EC1	TEMPORARY CONSTRUCTION ENTRANCE	1 / C3.2
EC2	SILT FENCE	3 / C3.2
EC3	INLET PROTECTION	4 / C3.2
EC10	CONCRETE WASH-OUT	2 / C3.2

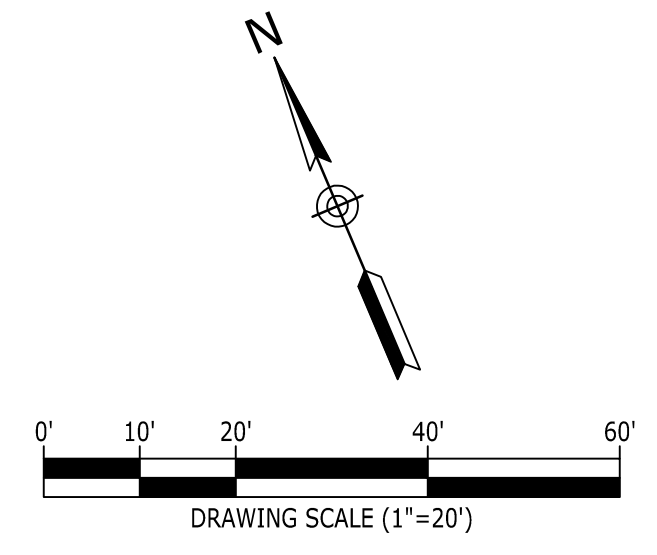
SITE DESCRIPTION AND NOTES:

THE SITE IS LOCATED ON TAX MAP 085, PARCEL 085 022.04 IN MANCHESTER, COFFEE COUNTY, TENNESSEE. CONSTRUCTION ACTIVITY ON THIS SITE WILL CONSIST OF DISTURBING APPROXIMATELY 0.88± ACRES TO CONSTRUCT A 2,400 SF COMMERCIAL BUILDING AND ASSOCIATED PARKING.

- APPROXIMATE CONSTRUCTION TIME TABLE:
 BEGIN CONSTRUCTION - APRIL 2025
 COMPLETE CONSTRUCTION - APRIL 2026
- CONSTRUCTION SEQUENCE:
 - ATTEND WATER QUALITY DIVISION PRE-CONSTRUCTION MEETING.
 - INSTALL CONSTRUCTION ENTRANCE AND SILT FENCE
 - CONTACT WATER QUALITY DIVISION - EROSION CONTROL INSPECTOR FOR INSPECTION OF EROSION CONTROL DEVICES TO OBTAIN GRADING PERMIT.
 - CLEAR AND GRUB THE REMAINING SITE.
 - CONSTRUCT REMAINING SITE ACCORDING TO APPROVED PLANS, INCLUDING ALL ADDITIONAL EROSION CONTROL DEVICES.
 - UPON PERMANENT SITE STABILIZATION SEED AND STRAW.
 - REMOVE ALL OTHER EROSION TEMPORARY CONTROL DEVICES PRIOR TO AS-BUILT APPROVALS.
- TOTAL PROJECT AREA = 33,546.02 SF (0.77± AC.)
 DISTURBED AREA = 38,310 S.F. (0.88± AC.)

EROSION CONTROL NOTES:

- EROSION PREVENTION AND SEDIMENT CONTROL MEASURES MUST BE IN PLACE AND FUNCTIONAL BEFORE EARTH MOVING OPERATION BEGINS AND MUST BE CONSTRUCTED AND MAINTAINED THROUGHOUT THE CONSTRUCTION PERIOD. TEMPORARY MEASURES MAY BE REMOVED AT THE BEGINNING OF THE WORKDAY BUT MUST BE REPLACED AT THE END OF THE WORKDAY.
- THE FOLLOWING RECORDS SHALL BE MAINTAINED ON OR NEAR SITE: THE DATES WHEN MAJOR GRADING ACTIVITIES OCCUR; THE DATES WHEN CONSTRUCTION ACTIVITIES TEMPORARILY OR PERMANENTLY CEASE ON A PORTION OF THE SITE; THE DATES WHEN STABILIZATION MEASURES ARE INITIATED; INSPECTION RECORDS AND RAINFALL RECORDS.
- THE CONTRACTOR SHALL MAINTAIN A RAIN GAUGE AND DAILY RAINFALL RECORDS AT THE SITE OR USE A REFERENCE SITE FOR A RECORD OF DAILY AMOUNT OF PRECIPITATION.
- PRE-CONSTRUCTION VEGETATIVE GROUND COVER SHALL NOT BE DESTROYED, REMOVED OR DISTURBED MORE THAN 10 DAYS PRIOR TO GRADING OR EARTH MOVING UNLESS THE AREA IS SEEDED AND/OR MULCHED OR OTHER TEMPORARY COVER IS INSTALLED.
- CONSTRUCTION MUST BE SEQUENCED TO MINIMIZE THE EXPOSURE TIME OF GRADED OR DENUDED AREAS.
- SEDIMENT SHOULD BE REMOVED FROM SEDIMENT TRAPS, SILT FENCES, SEDIMENTATION PONDS AND OTHER SEDIMENT CONTROLS AS NECESSARY AND MUST BE REMOVED WHEN DESIGN CAPACITY HAS BEEN REDUCED BY 50% OR AS DIRECTED BY OWNERS REPRESENTATIVE.
- THE CONTRACTOR SHALL REMOVE SEDIMENT FROM ALL DRAINAGE STRUCTURES BEFORE ACCEPTANCE BY LOCAL GOVERNING AGENCY OR AS DIRECTED BY THE OWNER'S REPRESENTATIVE.
- THE CONTRACTOR SHALL REMOVE THE TEMPORARY EROSION AND WATER POLLUTION CONTROL DEVICES ONLY AFTER A SOLID STAND OF GRASS HAS BEEN ESTABLISHED ON GRADED AREAS AND WHEN IN THE OPINION OF THE OWNER'S REPRESENTATIVE, THEY ARE NO LONGER NEEDED.
- DISTURBED AREAS SHALL BE STABILIZED WITHIN 14 DAYS OF THE COMPLETION OF GRADING ACTIVITIES. SLOPES 3:1 OR STEEPER SHALL BE STABILIZED WITHIN 7 DAYS.



FERBER COMPANY
 222 2ND AVENUE NORTH,
 SUITE 314
 NASHVILLE, TN 37201
 615-477-4486



CONSTRUCTION DRAWINGS
PANERA - MANCHESTER
 2314 HILLSBORO BLVD.
 MANCHESTER, COFFEE COUNTY, TENNESSEE

NO.	DATE	DESCRIPTION

DRAWING TITLE
FINAL EROSION CONTROL PLAN

PROJECT NUMBER
 20240293

DRAWING NUMBER
C3.1

SCHEDULE OF INSPECTIONS AND MAINTENANCE NOTES

- INSPECTIONS DESCRIBED IN PARAGRAPHS 2, 3 AND 4 BELOW, SHALL BE PERFORMED AT LEAST TWICE EVERY CALENDAR WEEK. INSPECTIONS SHALL BE PERFORMED AT LEAST 72 HOURS APART. WHERE SITES OR PORTION(S) OF CONSTRUCTION SITES HAVE BEEN TEMPORARILY STABILIZED, OR RUNOFF IS UNLIKELY DUE TO WINTER CONDITIONS (E.G., SITE COVERED WITH SNOW OR ICE) OR DUE TO EXTREME DROUGHT, SUCH INSPECTION ONLY HAS TO BE CONDUCTED ONCE PER MONTH UNTIL THAWING OR PRECIPITATION RESULTS IN RUNOFF OR CONSTRUCTION ACTIVITY RESUMES. INSPECTION REQUIREMENTS DO NOT APPLY TO DEFINABLE AREAS THAT HAVE BEEN FINALLY STABILIZED. WHEN STIPULATED SPECIFICALLY IN THE CONTRACT DOCUMENTS OR SWPPP, WRITTEN NOTIFICATION OF THE INTENT TO CHANGE THE INSPECTION FREQUENCY AND THE JUSTIFICATION FOR SUCH REQUEST TO THE LOCAL ENVIRONMENTAL FIELD OFFICE MAY BE REQUIRED.
- QUALIFIED PERSONNEL (PROVIDED BY THE PERMITTEE OR COOPERATIVELY BY MULTIPLE PERMITTEES) SHALL INSPECT DISTURBED AREAS OF THE CONSTRUCTION SITE THAT HAVE NOT BEEN FINALLY STABILIZED, AREAS USED FOR STORAGE OF MATERIALS THAT ARE EXPOSED TO PRECIPITATION, STRUCTURAL CONTROL MEASURES, LOCATIONS WHERE VEHICLES ENTER OR EXIT THE SITE, AND EACH OUTFALL.
- DISTURBED AREAS AND AREAS USED FOR STORAGE OF MATERIALS THAT ARE EXPOSED TO PRECIPITATION SHALL BE INSPECTED FOR EVIDENCE OF, OR THE POTENTIAL FOR, POLLUTANTS ENTERING THE SITE'S DRAINAGE SYSTEM. EROSION PREVENTION AND SEDIMENT CONTROL MEASURES SHALL BE OBSERVED TO ENSURE THAT THEY ARE OPERATING CORRECTLY.
- OUTFALL POINTS (WHERE DISCHARGES LEAVE THE STATE AND/OR ENTER WATERS OF THE STATE) SHALL BE INSPECTED TO DETERMINE WHETHER EROSION PREVENTION AND SEDIMENT CONTROL MEASURES ARE EFFECTIVE IN PREVENTING SIGNIFICANT IMPACTS TO RECEIVING WATERS. WHERE DISCHARGE LOCATIONS ARE INACCESSIBLE, NEARBY DOWNSTREAM LOCATIONS SHALL BE INSPECTED. LOCATIONS WHERE VEHICLES ENTER OR EXIT THE SITE SHALL BE INSPECTED FOR EVIDENCE OF OFFSITE SEDIMENT TRACKING.
- BASED ON THE RESULTS OF THE INSPECTION, ANY INADEQUATE CONTROL MEASURES OR CONTROL MEASURES IN DISREPAIR SHALL BE REPLACED OR MODIFIED, OR REPAIRED AS NECESSARY, BEFORE THE NEXT RAIN EVENT, BUT IN NO CASE MORE THAN 7 DAYS AFTER THE NEED IS IDENTIFIED.
- BASED ON THE RESULTS OF THE INSPECTION, THE SITE DESCRIPTION AND POLLUTION PREVENTION MEASURES IDENTIFIED IN THIS SWPPP SHALL BE REVISED AS APPROPRIATE, BUT IN NO CASE LATER THAN 7 DAYS FOLLOWING THE INSPECTION. SUCH MODIFICATIONS SHALL PROVIDE FOR TIMELY IMPLEMENTATION OF ANY CHANGES TO THE SWPPP, BUT IN NO CASE LATER THAN 14 DAYS FOLLOWING THE INSPECTION.
- ALL INSPECTIONS SHALL BE DOCUMENTED ON THE CONSTRUCTION STORMWATER INSPECTION CERTIFICATION FORM PROVIDED IN THE SWPPP REPORT FOR ALL CONSTRUCTION SITES. INSPECTION DOCUMENTATION WILL BE MAINTAINED ON SITE AND MADE AVAILABLE TO STATE OR LOCAL NPDES STAFF UPON REQUEST. INSPECTION REPORTS MUST BE SUBMITTED TO THE STATE AND/OR LOCAL NPDES OFFICE WITHIN 10 DAYS OF THE REQUEST. IF STATE OR LOCAL NPDES STAFF REQUESTS THE CONSTRUCTION STORMWATER INSPECTION CERTIFICATION FORM TO BE SUBMITTED, THE SUBMITTED FORM MUST CONTAIN THE PRINTED NAME AND SIGNATURE OF THE TRAINED CERTIFIED INSPECTOR AND THE PERSON WHO MEETS THE SIGNATORY REQUIREMENTS OF STATE'S CONSTRUCTION GENERAL PERMIT (CGP).
- TRAINED CERTIFIED INSPECTORS SHALL COMPLETE INSPECTION DOCUMENTATION TO THE BEST OF THEIR ABILITY. FALSIFYING INSPECTION RECORDS OR OTHER DOCUMENTATION OR FAILURE TO COMPLETE INSPECTION DOCUMENTATION SHALL RESULT IN A VIOLATION OF THIS PERMIT AND ANY OTHER APPLICABLE ACTS OR RULES.
- SUBSEQUENT OPERATOR(S) (PRIMARY PERMITTEES) WHO HAVE OBTAINED COVERAGE UNDER THE STATE'S CONSTRUCTION GENERAL PERMIT SHOULD CONDUCT TWICE WEEKLY INSPECTIONS, UNLESS THEIR PORTION(S) OF THE SITE HAS BEEN TEMPORARILY STABILIZED, OR RUNOFF IS UNLIKELY DUE TO WINTER CONDITIONS OR DUE TO EXTREME DROUGHT AS STATED ABOVE. THE PRIMARY PERMITTEE (SUCH AS A DEVELOPER) IS NO LONGER REQUIRED TO CONDUCT INSPECTIONS OF PORTIONS OF THE SITE THAT ARE COVERED BY A SUBSEQUENT PRIMARY PERMITTEE (SUCH AS A HOME BUILDER).

SITE ASSESSMENT NOTES

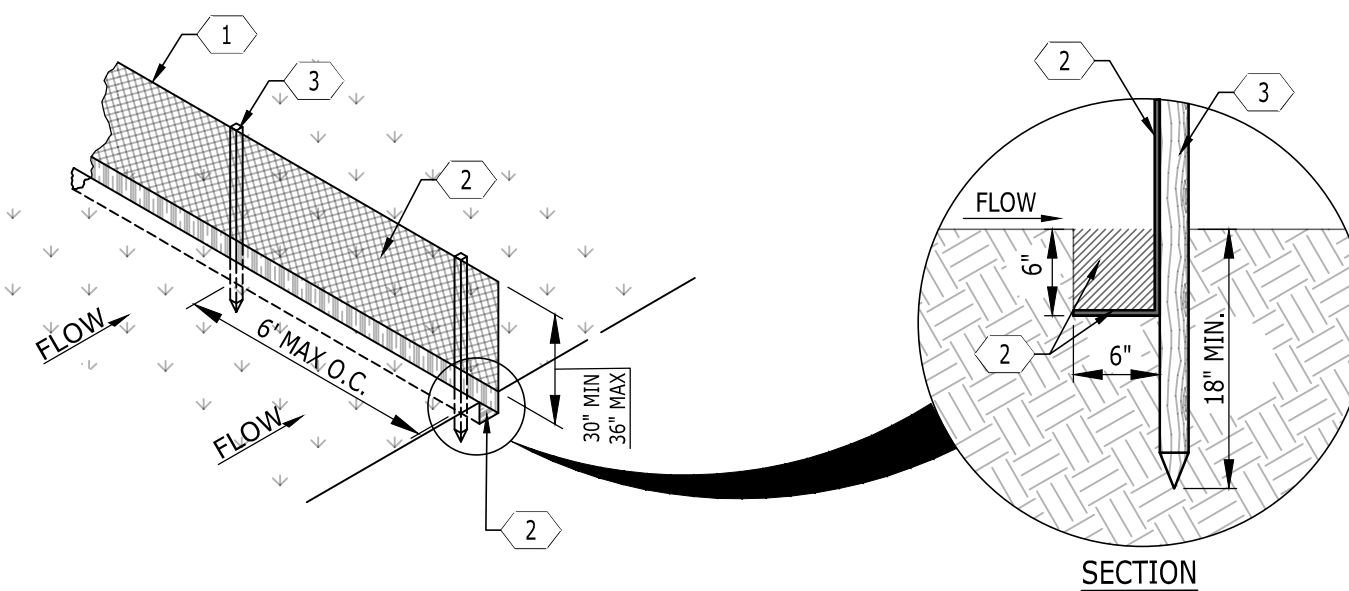
- THE SITE ASSESSMENT SHALL BE PERFORMED BY INDIVIDUALS WITH THE FOLLOWING QUALIFICATIONS:
 - A LICENSED PROFESSIONAL ENGINEER OR LANDSCAPE ARCHITECT
 - A CERTIFIED PROFESSIONAL IN EROSION AND SEDIMENT CONTROL (CPESC) OR
 - A PERSON THAT SUCCESSFULLY COMPLETED THE "LEVEL II DESIGN PRINCIPLES FOR EROSION PREVENTION AND SEDIMENT CONTROL FOR CONSTRUCTION SITES" COURSE, OR EQUIVALENT QUALIFYING TRAINING IN THE STATE OF THE PROJECT.
- QUALITY ASSURANCE OF EROSION PREVENTION AND SEDIMENT CONTROLS SHALL BE DONE BY PERFORMING SITE ASSESSMENT AT A CONSTRUCTION SITE. THE SITE ASSESSMENT SHALL BE CONDUCTED AT EACH OUTFALL INVOLVING DRAINAGE TOTALING 10 OR MORE ACRES OR 5 OR MORE ACRES IF DRAINING TO AN IMPAIRED OR EXCEPTIONAL QUALITY WATERS, WITHIN A MONTH OF CONSTRUCTION COMMENCING AT EACH PORTION OF THE SITE THAT DRAINS THE QUALIFYING ACREAGE OF SUCH PORTION OF THE SITE.
- AS A MINIMUM, SITE ASSESSMENT SHOULD BE PERFORMED TO VERIFY THE INSTALLATION, FUNCTIONALITY AND PERFORMANCE OF THE EPSC MEASURES DESCRIBED IN THE SWPPP REPORT. THE SITE ASSESSMENT SHOULD BE PERFORMED WITH THE INSPECTOR, AND SHOULD INCLUDE A REVIEW AND UPDATE (IF APPLICABLE) OF THE SWPPP REPORT. MODIFICATIONS OF PLANS AND SPECIFICATIONS FOR ANY BUILDING OR STRUCTURE, INCLUDING THE DESIGN OF SEDIMENT BASINS OR OTHER SEDIMENT CONTROLS INVOLVING STRUCTURAL, HYDRAULIC, HYDROLOGIC OR OTHER ENGINEERING CALCULATIONS SHALL BE PREPARED BY A PROFESSIONAL ENGINEER LICENSED IN THE STATE OF THE PROJECT.
- THE SITE ASSESSMENT FINDINGS SHALL BE DOCUMENTED AND THE DOCUMENTATION KEPT WITH THE SWPPP REPORT AT THE SITE. AT A MINIMUM, THE DOCUMENTATION SHALL INCLUDE INFORMATION INCLUDED IN THE INSPECTION FORM PROVIDED IN THE SWPPP REPORT. THE DOCUMENTATION MUST CONTAIN THE PRINTED NAME AND SIGNATURE OF THE INDIVIDUAL PERFORMING THE SITE ASSESSMENT AND THE FOLLOWING CERTIFICATION:

"I CERTIFY UNDER PENALTY OF LAW THAT THIS REPORT AND ALL ATTACHMENTS ARE, TO THE BEST OF MY KNOWLEDGE AND BELIEF, TRUE, ACCURATE, AND COMPLETE. I AM AWARE THAT THERE ARE SIGNIFICANT PENALTIES FOR SUBMITTING FALSE INFORMATION, INCLUDING THE POSSIBILITY OF FINE AND IMPRISONMENT FOR KNOWING VIOLATIONS."
- THE SITE ASSESSMENT CAN TAKE THE PLACE OF ONE OF THE TWICE WEEKLY INSPECTIONS REQUIREMENT.
- STATE OR LOCAL NPDES AUTHORITIES MAY REQUIRE ADDITIONAL SITE ASSESSMENT(S) TO BE PERFORMED IF SITE INSPECTION BY NPDES PERSONNEL REVEALS SITE CONDITIONS THAT HAVE POTENTIAL OF CAUSING POLLUTION TO THE WATERS OF THE STATE.

NOTE:

CONTRACTOR SHALL INSTALL A 4'X4' WEATHER PROOF SIGN (6' HEIGHT) AT THE MAIN CONSTRUCTION ENTRANCE. THE SIGN SHALL HAVE THE FOLLOWING INFORMATION:

- A COPY OF THE NOTICE OF COVERAGE WITH THE NPDES PERMIT NUMBER (FURNISHED BY ENGINEER).
- THE NAME AND TELEPHONE NUMBER OF A LOCAL CONTACT PERSON (FURNISHED BY CONSTRUCTION MANAGER).
- DESCRIPTION OF PROJECT (FURNISHED BY CONSTRUCTION MANAGER).



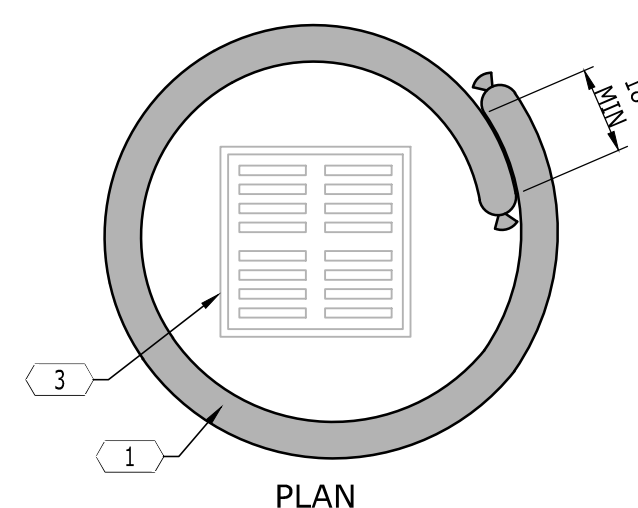
KEYNOTES	
CODE	DESCRIPTION
1	WOVEN WIRE FENCE BACKING FOR TYPE "B" SILT FENCE ONLY
2	ENGINEERING FILTER FABRIC*; BURY BOTTOM OF FABRIC IN 6"x6" TRENCH; BACKFILL TRENCH WITH SOIL AND COMPACT
3	POST; WOOD (2"x2" MIN.) OR STEEL T-POST (1.3 LB./FT. MIN.)
4	98' MAXIMUM RECOMMENDED SLOPE LENGTH
5	LEVEL CONTOUR; INSTALL SILT FENCE ALONG A LEVEL CONTOUR
6	MAX. TRIBUTARY AREA: 0.25 AC. / 100 FT. OF FENCE
7	TURN LAST 6' OF FENCE UP SLOPE

SILT FENCE - TYPES A & B

NOT TO SCALE

SPECIFICATIONS		
Tensile Strength (Lbs. Min.) (1) (ASTM D-4632)	Warp-120 Fill -100	Warp-120 Fill -100
Elongation (%Max.) (ASTM D-4632)	40	40
AOS (Apparent Opening Size) (Max. Sieve Size) (ASTM D-4751)	#30	#30
Flow Rate (Gal/Min/Sq. Ft.) (GDT-87)	25	25
Ultraviolet Stability (2) (ASTM D-4632 after 300 hours weathering in accordance with ASTM D-4355)	80	80
Bursting Strength (PSI Min.) (ASTM D-3786 Diaphragm Bursting Strength Tester)	175	175
Minimum Fabric Width (Inches)	36	22

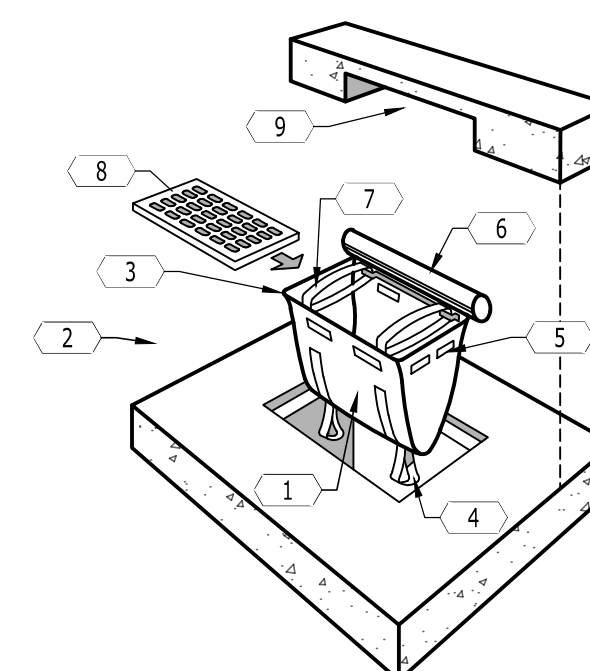
KEYNOTES	
CODE	DESCRIPTION
1	SILTATION EEL DEVICE (SOCK); USED IN AREAS WHERE EXISTING PAVEMENT PREVENTS THE USE OF SILT FENCE; STABILIZE THE SILTATION EEL BY PLACING SANDBAGS AS NEEDED ON TOP OF THE DEVICE
2	PAVEMENT SURFACE
3	INLET STRUCTURE GRATE



TEMPORARY SILTATION EEL INLET PROTECTION FOR CATCH BASINS

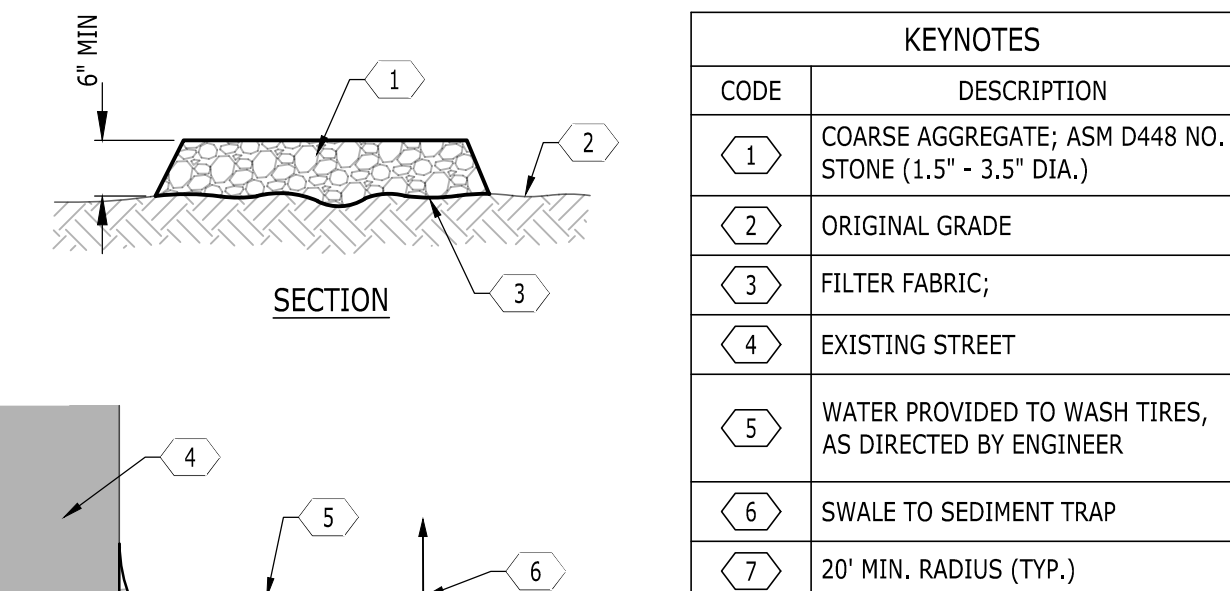
NOT TO SCALE

KEYNOTES	
CODE	DESCRIPTION
1	DANDY CURB SACK INLET PROTECTION; CONTRACTOR TO SELECT MODEL WITH OVERFLOW PORTS; FOR INLETS THAT ARE THE SUMP FOR LARGE AREAS, SURROUNDING INLET WITH AN EROSION EEL IN ADDITION MAY BE NECESSARY BASED ON FIELD OBSERVED PERFORMANCE
2	MANAGEABLE 2' CONTAINMENT AREA
3	REINFORCED CONCRETS
4	DUMPING STRAPS
5	OPTIONAL OUTFLOW PORTS
6	CURB FILTER
7	LIFT STRAPS
8	STORM GRATE
9	CURB OPENING
INSTALLATION: 1. PLACE THE EMPTY DANDY BAG OVER THE GRATE AS THE GRATE STANDS ON END. 2. FOR OIL AND SEDIMENT MODEL; TO INSTALL OR REPLACE ABSORBENT, PLACE ABSORBENT PILLOW IN POUCH, ON THE BOTTOM (BELOW-GRADE SIDE) OF THE UNIT. 3. TUCK THE ENCLOSURE FLAP INSIDE TO COMPLETELY ENCLOSE THE GRATE. 4. HOLDING THE LIFTING DEVICES, INSERT THE GRATE INTO THE INLET BEING CAREFUL NOT TO DAMAGE THE DANDY BAG UNIT.	
MAINTENANCE: 1. THE CONTRACTOR SHALL REMOVE ALL ACCUMULATED SEDIMENT AND DEBRIS FROM SURFACE AND VICINITY OF UNIT AFTER EACH RAIN EVENT OR AS DIRECTED BY ENGINEER/INSPECTOR. DISPOSE OF UNIT NO LONGER IN USE AT AN APPROPRIATE RECYCLING OR SOLID WASTE FACILITY. 2. FOR OIL AND SEDIMENT MODEL; REMOVE AND REPLACE ABSORBENT WHEN NEAR SATURATION.	



DANDY CURB SACK INLET PROTECTION FOR CURB INLETS

NOT TO SCALE

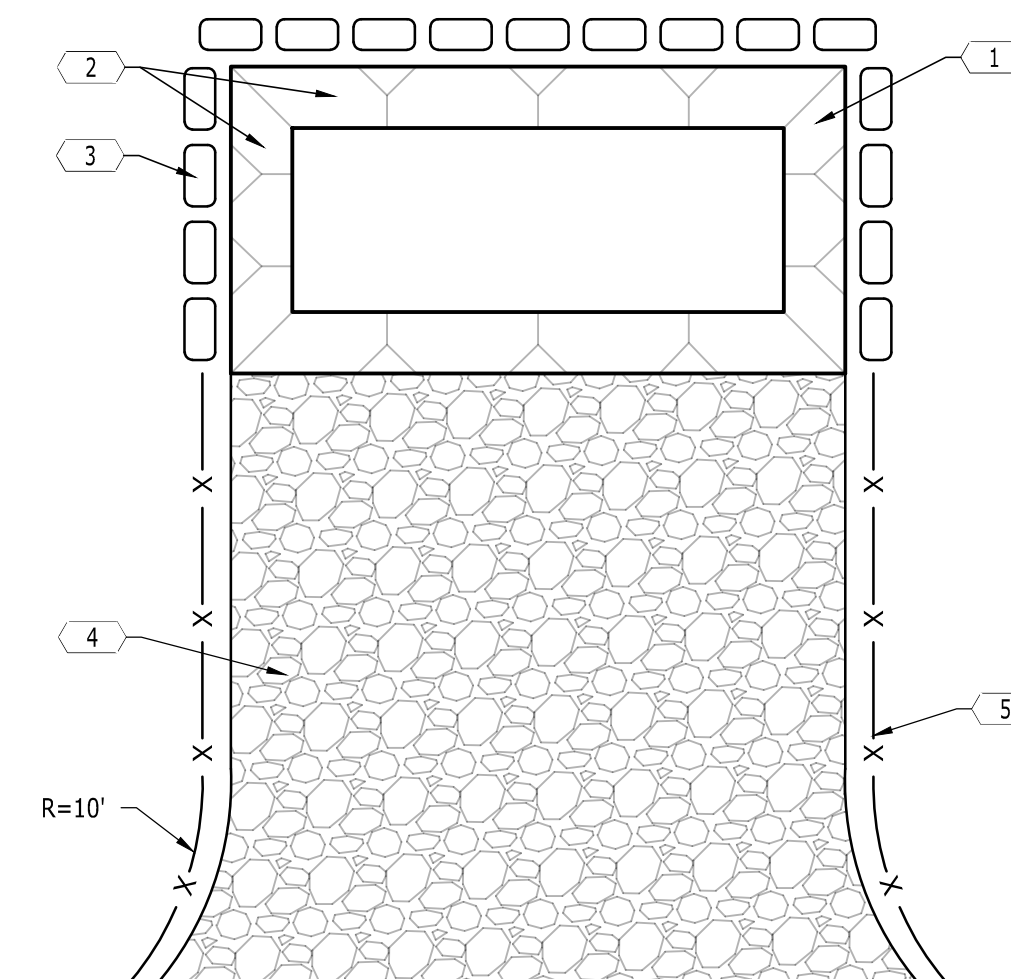


KEYNOTES	
CODE	DESCRIPTION
1	COARSE AGGREGATE; ASM D448 NO. 1 STONE (1.5" - 3.5" DIA.)
2	ORIGINAL GRADE
3	FILTER FABRIC;
4	EXISTING STREET
5	WATER PROVIDED TO WASH TIRES, AS DIRECTED BY ENGINEER
6	SWALE TO SEDIMENT TRAP
7	20' MIN. RADIUS (TYP.)

TEMPORARY CONSTRUCTION ENTRANCE

NOT TO SCALE

KEYNOTES	
CODE	DESCRIPTION
1	CONCRETE WASH-OUT; 10'x20'; LINE WITH IMPERMEABLE GEOTEXTILE FABRIC AND SHALL HAVE A MIN. 12" DEPTH.
2	SLOPE SIDES 1:1
3	SANDBAGS
4	WASH-OUT GRAVEL ENTRANCE; 20'x20'; EDGE OF ENTRANCE TO BE LOCATED ON THE CURB EDGE OF ROADWAY
5	SILT FENCE; STAKE DOWN FIRST 10 FEET AT ENTRANCE WITH IRON RODS SPACED AT 12" O.C.
NOTE: 1. TEMPORARY PIT SHALL BE CONSTRUCTED DEEP ENOUGH TO HANDLE ALL ANTICIPATED SLURRY, SOLID WASTE AND DIRECT RAINFALL. 2. NO RUNOFF SHALL LEAVE THE WASH-OUT AREA. 3. WASH-OUT WASTES INTO TEMPORARY PIT WHERE CONCRETE CAN SET, BE BROKEN UP AND PROPERLY DISPOSED OF. 4. WASH-OUT FACILITIES MUST BE CLEANED, OR NEW FACILITIES CONSTRUCTED AND READY FOR USE, ONCE THE WASH-OUT IS 75% FULL. 5. WASH-OUT SHALL BE LOCATED A MIN. OF 50' AWAY FROM STORM DRAINS, OPEN DITCHES, WETLANDS AND WATER BODIES. 6. SIGNAGE IDENTIFYING THE CONCRETE WASH-OUT AREA SHALL BE INSTALLED WITHIN 5' OF THE WASH-OUT FACILITY.	



CONCRETE WASH-OUT

NOT TO SCALE

4

INLET PROTECTION

NOT TO SCALE

2

CONCRETE WASH-OUT

NOT TO SCALE



FERBER COMPANY
 222 2ND AVENUE NORTH,
 SUITE 314
 NASHVILLE, TN 37201
 615-477-4486



CONSTRUCTION DRAWINGS
PANERA - MANCHESTER
 2314 HILLSBORO BLVD.
 MANCHESTER, COFFEE COUNTY, TENNESSEE

NO.	DATE	DESCRIPTION

DRAWING TITLE
SEDIMENT AND EROSION CONTROL DETAILS
 PROJECT NUMBER
 20240293
 DRAWING NUMBER
C3.2